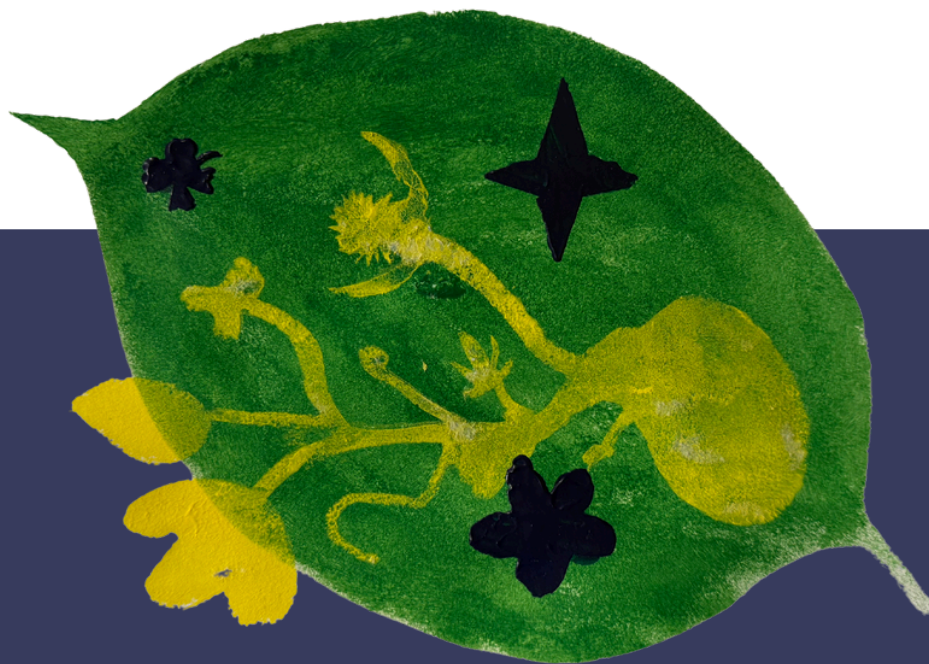




Celebrating 25 Years of Hope, Growth, and Transformation



2024-2025

New Path Youth and Family Services  
Annual General Meeting Report

# A Message from Our CEO and Board Chair



**Jim Harris**

*Chief Executive Officer*

A handwritten signature in cursive script, appearing to read "Jim Harris".



**Desiree Burke**

*Board Chair*

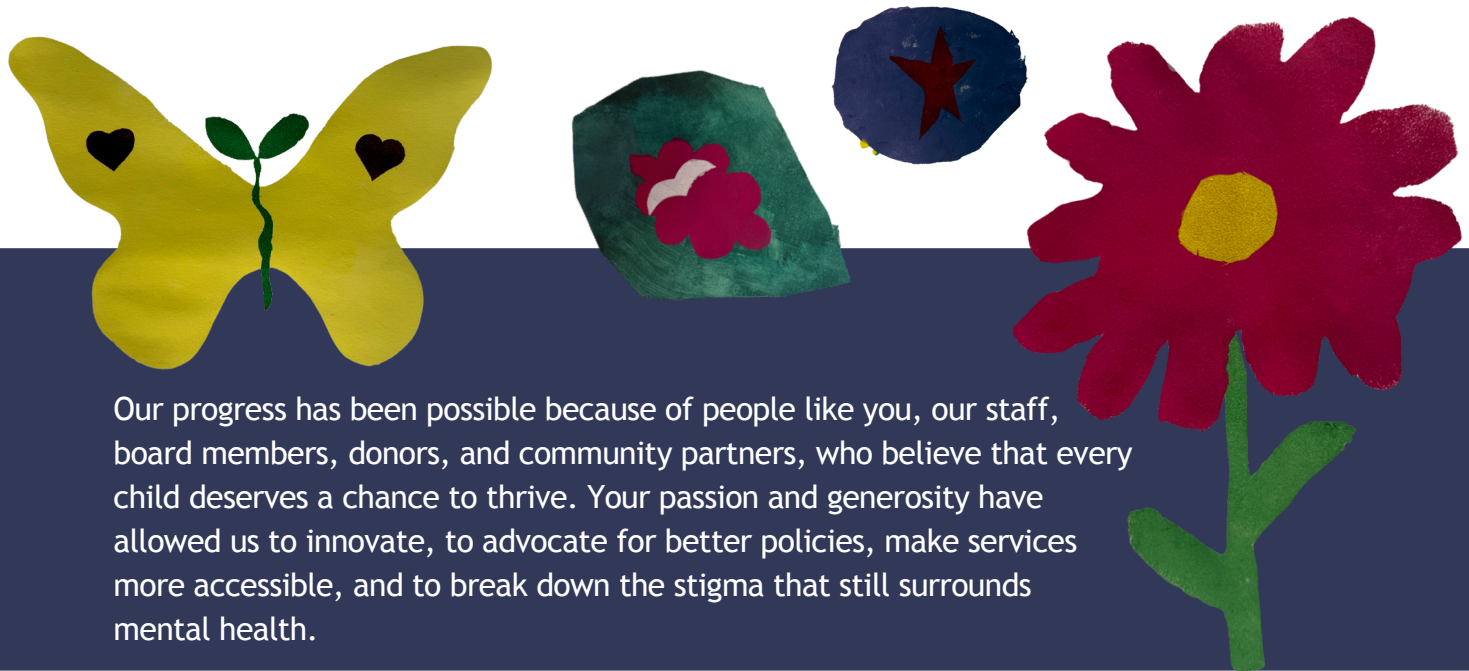
A handwritten signature in cursive script, appearing to read "Desiree Burke".



This year marks a significant milestone for New Path - 25 years of supporting children and youth, as well as their families and caregivers, offering hope, fostering growth, and embracing transformation. As we reflect on this journey, we are reminded not only of the challenges faced but of the incredible strength, resilience, and courage of the children and families we serve.

Since our beginning, we have witnessed firsthand the challenges that young people face; anxiety, depression, bullying, and the pressures of an ever-changing world. These challenges are real, and they remind us why our mission is so important.

Over the past year, we have expanded our programs and deepened our partnerships with schools, healthcare providers, and community organizations. Together, we have created safe spaces where children can talk about their feelings, learn healthy coping skills, and know that they are not alone.



Our progress has been possible because of people like you, our staff, board members, donors, and community partners, who believe that every child deserves a chance to thrive. Your passion and generosity have allowed us to innovate, to advocate for better policies, make services more accessible, and to break down the stigma that still surrounds mental health.

Our work is far from over. The need for accessible and compassionate mental health care continues to grow. As we look ahead, we are committed to listening even more closely to the voices of children, youth and families, to adapting our services to meet their evolving needs, and to realizing our vision of healthy, thriving and connected communities that support personal growth and well-being.

Our Annual General Meeting is not just a reflection of what we have accomplished, but a call to action for the year ahead. Let's continue to work together, to support one another, and to ensure that every child in our community feels seen, heard, and supported.

Thank you for being part of this milestone celebration. Thank you for believing in what is possible. And thank you for helping us shape a future full of hope, growth, and transformation - for the next 25 years and beyond.

# Who We Are

New Path offers a range of free mental health services for children, youth, families and caregivers in English and en français.

Counselling support is offered in-person, by phone or online. Appointments can be made up to two weeks ahead of time and often, on the same day. Interpreters are also available.

Appointments can be booked on our website: [www.newpath.ca](http://www.newpath.ca) or by calling: 705-725-7656

We will work with you to answer your questions, guide you through the services that are available, and match you with further supports that best meet your needs.



## Vision

Healthy, thriving and connected communities that support personal growth and well-being.

## Mission

Through leadership and partnerships, we ensure that children and youth have integrated, accessible, and inclusive mental health services when and where they need them.



# Values

Our values set the foundation for our efforts to achieve our mission: Through leadership and partnerships, we ensure that children and youth have integrated, accessible, and inclusive mental health services when and where they need them.



Compassion



Inclusivity



Engagement



Adaptability



Quality



Collaboration



# Celebrating Young Artists

Throughout this report you will see artwork that was created by children and youth, teachers, as well as artists in partnership with the MacLaren Art Centre. The pieces focused on what hope, growth and transformation meant to participants with the colour green as its central theme.







# Service Highlights

This year has been one of transformation, collaboration, and innovation in how we deliver services to children, youth, and families in Simcoe County. Through strategic partnerships, capacity-building, and equity-focused programming, we have made meaningful strides in supporting complex needs and reducing service barriers.

## The Teen Parent and Success Program (TAPS)

This program was reimagined in collaboration with Dnaagdawenmag Binnoojiiyag Child & Family Services (DBCFS) and Simcoe Muskoka Family Connexions (SMFC), shifting to a multidisciplinary model that supports children returning to Simcoe County and strengthens placements by working closely with families, foster parents, and service providers. This model has provided specialized treatment access that would otherwise not be available locally to these families.

## Formal Capacity Assessments

Our staff began formally assessing capacity to ensure clients who are capable, can access services independently and without barriers.

## Expansion of Family Support Program (FSP)

A major achievement this year was the expansion of our FSP to two full-time positions, thanks to collaboration with our Ministry Supervisor and reallocation of core service funding. Empowering caregivers with tools, supports, and community connections is central to our mission and is supported by consistent research showing the value of caregiver involvement in long-term outcomes.





## Investing in Staff Development

We continue to invest in staff development through evidence-based practice (EBP) training, including Cognitive Behaviour Therapy (CBT), Trauma Focused CBT, Family Therapy, and Triple P Primary Care. In addition, new processes were implemented to ensure fidelity and high-quality, effective service delivery. Without the dedication, compassion, and expertise of our staff, who are at the heart of everything we achieve, we would not be able to provide the level of service New Path does.

## Black Health Equity Funding Received from Ontario Health

In our continued effort to advance equity, New Path also secured funding from Ontario Health to increase access to Black therapists for children, youth, and families, providing culturally responsive, long-term mental health care. A dedicated therapist was recruited to support this work, and New Path is committed to collaborating and creating referral pathways with our local Black led, focused and serving organizations.



## Circle of Security Collaboration

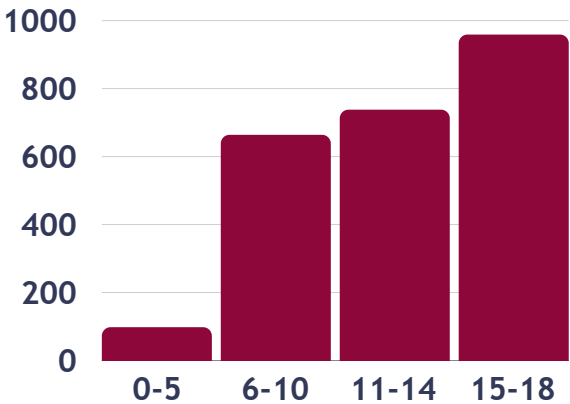
Working collaboratively with Dnaagdawenmag Binnoojiiyag Child & Family Services (DBCFS) the Circle of Security parenting group was Indigenized with support from the Knowledge Institute. A joint presentation with DBCFS with a parent participant took place at the Children's Mental Health Ontario conference to a full audience, showcasing this culturally grounded work.



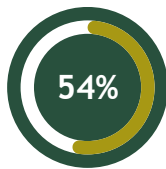
# Our Impact

At New Path, we are dedicated to delivering high-quality, evidence-based mental health services and supports to children, youth and their families in an environment that promotes accountability, transparency, and trust.

Last year, 3086 children and youth, their families and caregivers accessed mental health services. Of these, 2460, were under the age of 18.



Ages of the 2460 children and youth who accessed our services last year.



female



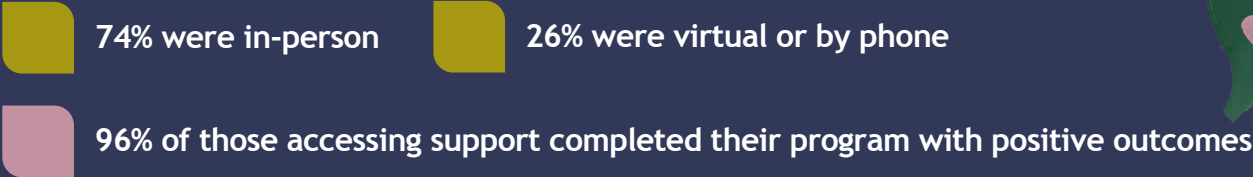
male



other gender identities including transgender, gender non-conforming or non-binary

Please note that some children and youth preferred not to answer. Their responses were not included in the percentages above.

A total of 4911 sessions/contacts happened April 1, 2024 to March 31, 2025



We engage in many activities on an ongoing basis to achieve our core commitment to providing quality services. These activities foster an environment that is responsive to client and family needs and helps us identify opportunities to enhance our services and overall organizational performance as a leading mental health agency.

### New Path Perception of Care (NP-POC) Survey

For three weeks in the Winter of 2025, we asked all of our clients to provide their feedback about the services received.

We received 156 completed surveys for a response rate of 88%.



94% of respondents said they would recommend New Path if a friend/family needed similar help

98% of respondents said they were pleased with the help received from New Path

# Family Engagement

New Path remains committed to engaging families in an equal and active partnership and embedding the family voice in all that we do. In this way, families recognize their own needs, strengths and resources and empower themselves to take an active role in creating positive change for their own family.

## Family Support Program (FSP) at New Path

The FSP supports family participation in New Path's clinical services and as a standalone program based on the family's needs. FSP workers have lived experience in services and hope to use that experience to support families with resources and community connections, while working on goals identified by the caregivers. This can include recreation and school support to mental health and food/housing supports.

Most recently the FSP team participated in a Bridge Out of Poverty training, to gain a better understanding of those living in poverty. Their investment in ongoing training on sensitive issues speaks volumes about their investment in the families they work with.



## Better Together Peer Support Group for Parents & Caregivers

Our peer support group continues to meet monthly during the school year, while taking a break in the summer months. Through this group, families have the opportunity to connect with one another in a safe environment, share their experiences and access resources and events that will support them in their own journey.



## New Path's Family Advisory Committee (FAC)

The FAC is made up of family members, New Path staff and Board Members.

This year there were many initiatives that the FAC took part in such as:

- selecting recipients of the second & third annual WOW awards, awards for excellence in youth & family engagement
- sharing family experiences during New Path's Accreditation Review
- discussing Food Insecurity and how New Path can support youth/families through snack bins at all office locations
- providing feedback to include family voice in program specific forms such as: Triple P goals and safety notices for waiting rooms
- attending and participating in the New Path Strat Café
- participating as committee members to support planning the AGM and Pride BBQ

**Family Engagement enables families to get involved, have an impact, and help create positive changes to support improving mental health services and systems for all families.**



# Youth Engagement

The Youth Advisory Committee (YAC) assisted in planning various events at New Path. They provided a valuable youth - centered perspective.

## Children's Mental Health Week

We at the YAC were inspired by the theme of self-care and personal advocacy this year for Children's Mental Health Week. We made self-care bags for youth to enjoy that were a resounding success.

## Annual PRIDE BBQ

Youth were an integral part of planning the annual PRIDE BBQ that took place at Sunnidale Park last summer. This was an incredible, family-friendly event that raised over \$1800 in support of the Gilbert Centre and their 2S-LGBTQ+ programs in Simcoe Muskoka.



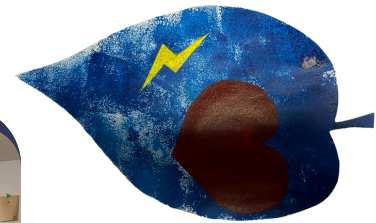
“ *The youth on the youth advisory committee have been full of creativity this year! We have been exalting youth voice, opinion and excellence this year and look forward to continuing a bright and promising path.*  
*Naesiah Shannon, Youth Engagement Lead*

### Accreditation Through a Youth Lens

Youth from the YAC learned about, reflected upon, and prepared for the accreditation interviewing process to support New Path in this very important organizational priority.

### Strat Café

This year, the YAC participated in the Strat Café again, but hosted a table for the first time! The youth prepared excitedly and provided their vital feedback about how youth engagement plays such an important role here at New Path.



**YOUTH**  
**First**

# Our New Path Team

Together as a team, staff and students have nurtured hope, supported growth and witnessed many transformational journeys in the lives of the children, youth and families we support.

Over the past year, we have welcomed 26 new members to our team:

- 12 Staff (9 Frontline Staff, 3 Support Services Staff)
- 5 Relief Workers
- 7 Student Placements
- 2 Youth Workers via the Canada Summer Jobs Grant



There are 14 staff celebrating 25 years of service or more this year!





# Engagement Through Committees

Our 10+ Committees and Working Groups at New Path are essential to helping us adapt, engage, and improve inclusivity for both staff and clients.

## Accreditation Committee

Every four years, New Path undertakes an accreditation process to ensure the highest quality services for the children, youth and families we support. The accreditation committee has worked diligently to support our staff, youth, families and board members to welcome the Review Team from the Canadian Centre for Accreditation.

## Negotiating and Employee/Employer Relations (EERC) Committees

In collaboration with OPSEU, we reached a new collective agreement effective April 1, 2024 - March 31, 2026. Both the Negotiating Committee and the Employee/Employer Relations Committee have supported our efforts to continuously improve employee experience, well-being and retention.

On behalf of the Board of Directors and Management team at New Path, we would like to express our gratitude to all staff and students for the profound impact they have in the lives of the children, youth and families we support.

Here's to an incredible 25 years - and to the journey ahead!









A collage of social media icons. It includes a dark blue speech bubble with a white thumbs-up icon, a green play button icon, a large green rounded rectangle with a white heart icon, a blue speech bubble with three white dots, and a dark blue heart icon with a white outline.

**Thank you for being part of  
our online community!**



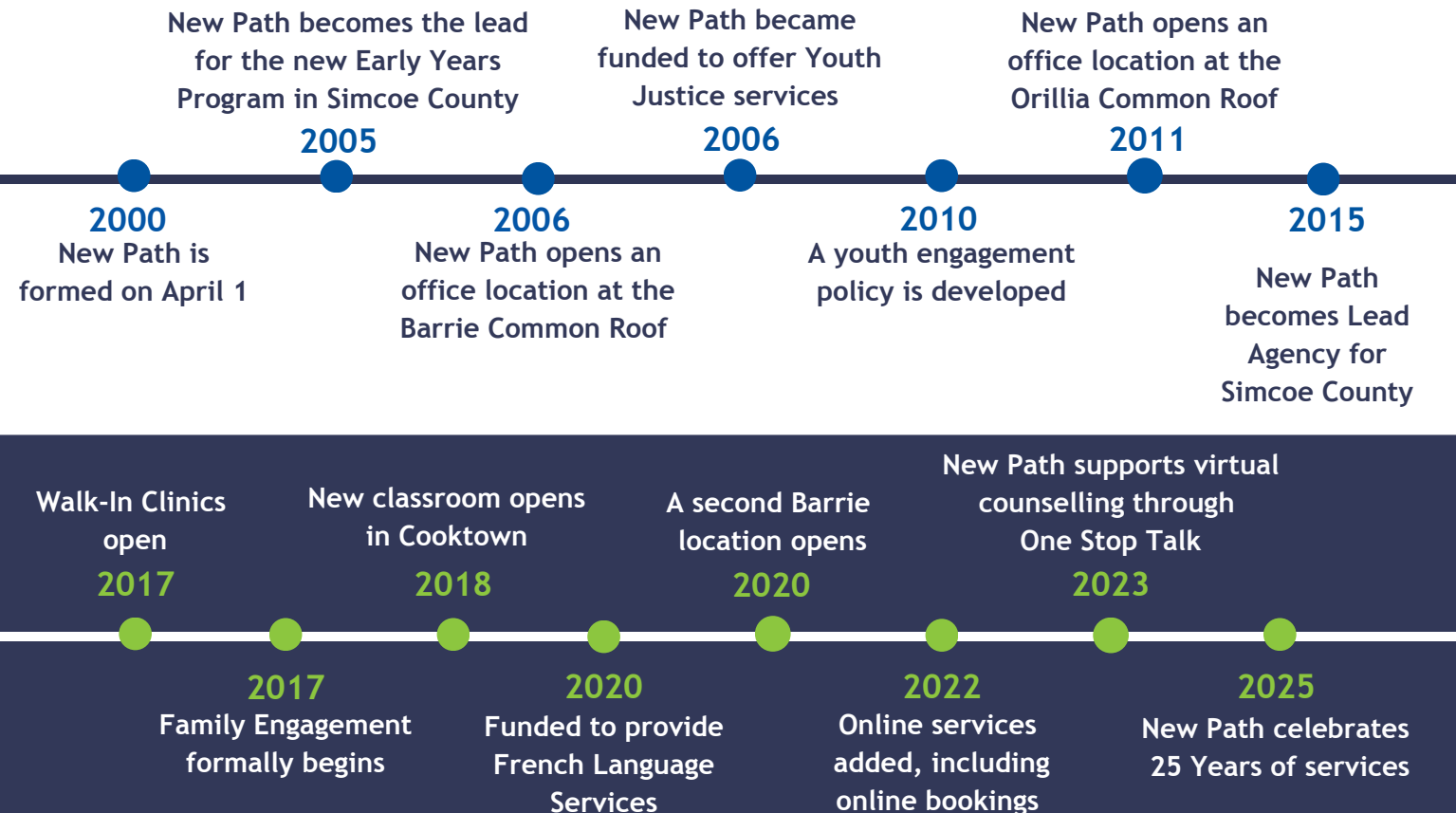
# 25 Years of Service Excellence



This year marks the 25<sup>th</sup> anniversary of New Path.

We are proud of our history and growth and look forward to continuing to serve our Simcoe County community.

Here are just some of our highlights over the past 25 years!





# Our Funders and Donors

New Path is funded through the Ministry of Health (MOH), the Ministry of Children, Community and Social Services (MCCSS), and Ontario Health to offer free, accessible and accredited child and youth mental health services to children and youth, their families and caregivers across Simcoe County.

We are also thankful to receive support from The County of Simcoe, Royal Victoria Regional Health Centre, The Knowledge Institute, The Government of Canada, Medavie, Children's Mental Health Ontario, Waypoint Centre for Mental Health, and The Rotary Club of Barrie.

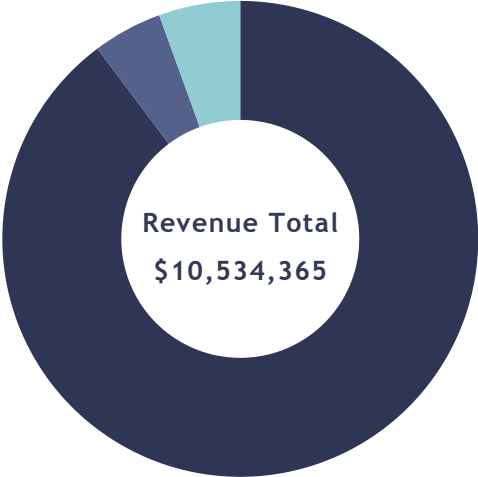
It is with deep gratitude that we also recognize the many businesses, schools, service partners and individuals for their collaborative efforts and donations, both through in-kind and financial contributions, that support children and youth, their families and caregivers across Simcoe County.




Thank you!

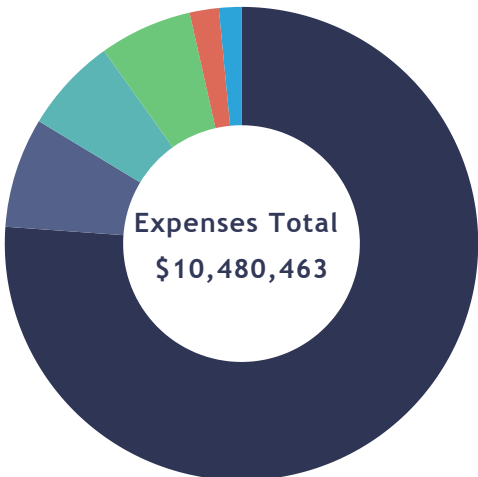





# Financial Overview 2024/2025



	Ministry of Health, Ministry of Children, Community and Social Services, and Ontario Health	\$9,454,692
	Expenditure Recoveries, Investment Income, and Other Income	\$582,062
	Other Operating Grants	\$497,611



	Salaries & Benefits	\$7,979,307
	Program and Administrative Costs	\$787,503
	Purchased Services	\$679,926
	Building Occupancy	\$664,628
	Other Expenses	\$208,468
	Repairs and Maintenance	\$160,631

# Our Board of Directors

Here at New Path, we are so fortunate to have an incredible volunteer Board of Directors made up of individuals from across Simcoe County. Board members have an opportunity to contribute to building better futures for children and youth, their families and caregivers in Simcoe County with mental health needs. We thank you for your dedication and support!



## **Board Chair**

Desiree Burke



## **Board Vice-Chair**

Laura Kloosterman



## **Past Chair**

Dale Boyle



## **Audit Committee Chair**

Rick McHale



## **Board Development Chair**

Amanda Palermo



## **Board Governance Chair**

Paul Shervill



## **Directors**

Shannon Dawson

Kulbir Dhaliwal

Megan Forget

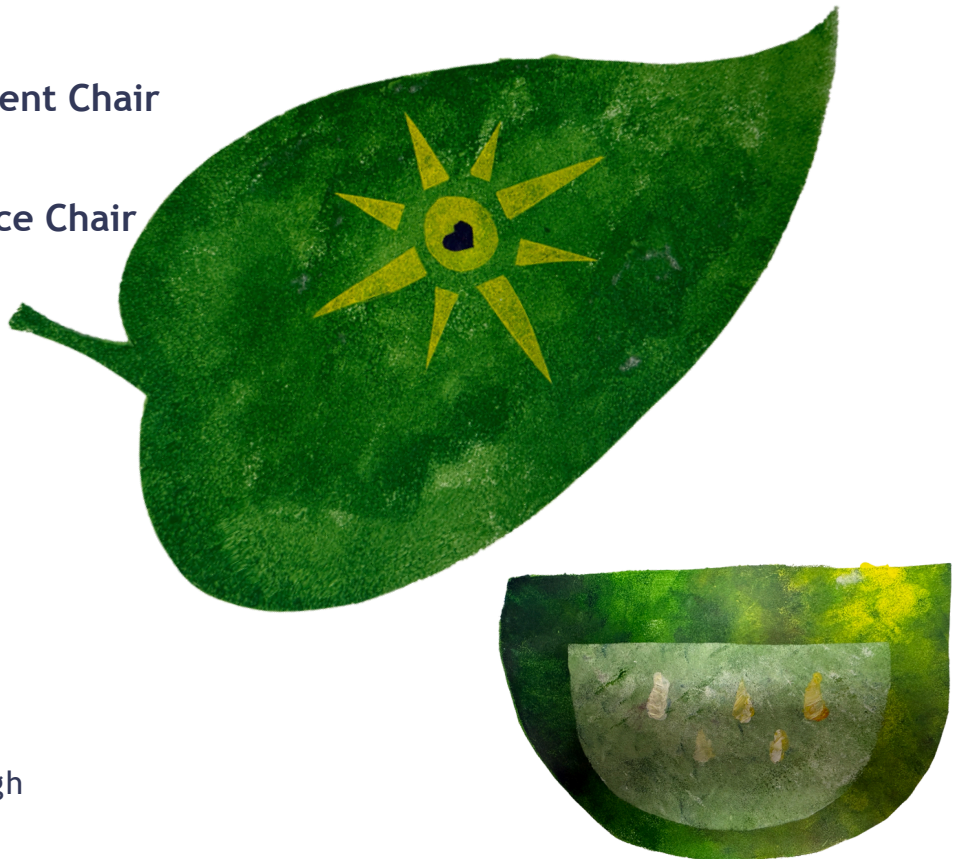
Meghan Gray

Tim Gronfors

Agnes McLachlan

Darryl Paul

Richie Gobind Singh



# Our Leadership Team



## **CEO**

Jim Harris



## **Executive Assistant and Board Liaison**

Maureen Armstrong



## **Director of Services**

Lisa Cluett



## **Director of Operations and Planning**

Biju Peter



## **Manager of People and Culture**

Tara Powers



## **Manager of Continuous Quality Improvement**

Magda Montagnese



## **Manager of Finance**

Kim Moreau



## **Manager IS and Network**

Mahendra Patel



## **Manager of Communications**

Dominika Zapolnik



# Services When and Where You Need Them

New Path has office locations across Simcoe County. Our goal is to ensure you are able to access child and youth mental health supports when and where you need them, in-person, by-phone and online.

Learn more on our website: [www.newpath.ca](http://www.newpath.ca) or give us a call: 705-725-7656

Because Mental Health Can't Wait!



## Alliston

46 Wellington Street West



## Barrie Common Roof

165 Ferris Lane



## Barrie Lakeshore

299 Lakeshore Drive, Units 200-201



## Bradford

118 Barrie Street



## Collingwood

199 Campbell Street



## Cookstown

3740 Line 13 BWG, RR#3



## Orillia

169 Front Street